

# UCSF Department of Emergency Medicine Newsletter



July/August 2017 - Issue #70

## ACHIEVEMENTS



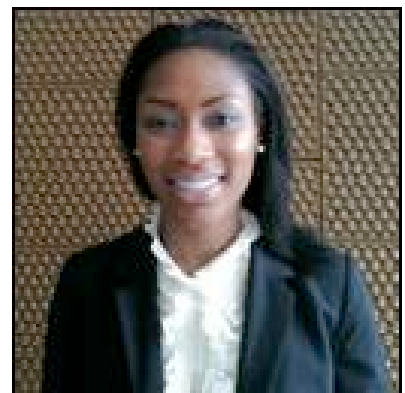
**Dr. James Hardy**, Assistant Clinical Professor of Emergency Medicine, will serve as UCSF's Medical Director for Golden Gate Urgent Care (GGUC). UCSF Health has signed an affiliation agreement with GGUC to collaborate in providing top-quality urgent care in the GGUC's six Bay Area locations. Through the agreement, the co-medical directors at UCSF Health's Department of Emergency Medicine and GGUC will work together to provide convenient, local access to the latest technology and treatment options for a variety of urgent health concerns.

**Dr. Hardy** won the UCSF Caring Wisely 2017-2018 Projects Contest for his proposal "Care of the Homeless at UCSF: Better Care, Faster Placement, Less Cost."

**Dr. Jackie Nemer** was selected to serve as Medical Director for Clinical Documentation Integrity for UCSF Health, starting July 1st. In her new leadership role, she will work in the UCSF Department of Quality to lead and oversee a multidisciplinary team engaged in clinical documentation improvement. Jackie will serve as the prime liaison to the UCSF medical staff in this important effort.



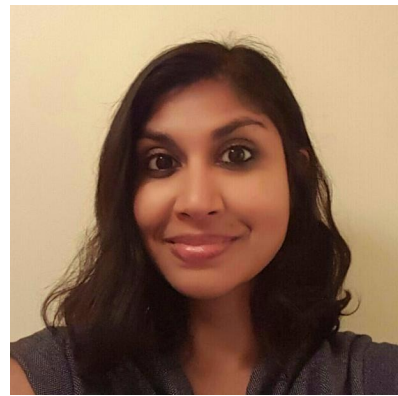
## NEW FACULTY



**Dr. Margaret Lin**, Assistant Clinical Professor of Emergency Medicine, joins the full-time faculty at Benioff Children's Hospital San Francisco and ZSFG. Dr. Lin attended Stanford University and then Washington University School of Medicine. She trained in Emergency Medicine followed by an Emergency Ultrasound Fellowship at Harvard's Beth Israel Deaconess Medical Center and a Pediatric Emergency Medicine fellowship at Boston Children's Hospital where she was honored with the Michael Shannon Emergency Medicine Research Funding award.

**Dr. Juan Carlos Montoy**, Clinical Instructor, joins the full-time faculty at ZSFG. After graduating from Harvard College, Juan Carlos worked in various roles at a free clinic in San Francisco's Tenderloin District. He then attended Stanford University School of Medicine and obtained a PhD in Economics from UC Berkeley. Juan Carlos is a graduate of our EM residency program and served as our department's first research fellow.

**Dr. Brenda Oiyemhonlan**, Clinical Instructor, joins the full-time faculty at ZSFG. Dr. Oiyemhonlan attended UC Davis. She received her master's in public health and master's in health services administration at the University of Michigan and then worked as a strategic management health care consultant for Accenture in Atlanta, Georgia. She attended medical school at USC and completed her EM residency at SUNY Downstate/Kings County Medical Center. Brenda completed her Administration fellowship at Emory University/Grady Memorial Health.



**Dr. Eric Silverman**, Assistant Clinical Professor of Emergency Medicine, joins our full-time faculty at ZSFG. Dr. Silverman did his undergraduate work at the University of Pennsylvania where he graduated cum laude with a major in biological basis of behavior. He attended medical school at Temple University and completed his EM residency at Cooper University Hospital in Camden, New Jersey, where he served as Chief Resident. Eric completed his two-year EMS fellowship here at UCSF, where he has served as the Assistant Base Hospital Medical Director.

**Dr. Kathy Vo**, Assistant Clinical Professor of Emergency Medicine, joins our full-time faculty at ZSFG after completing her fellowship in Toxicology here at UCSF. Dr. Vo attended the University of California at Riverside and went on to medical school at UCLA. She graduated from our Emergency Medicine residency program in 2014.

**Dr. Kavita Gandhi**, Clinical Instructor, will join our full-time faculty at Parnassus on September 1. Dr. Ghandi completed her undergraduate studies at the University of Florida and then attended the University of Maryland, graduating with an MD and a PhD in the field

of molecular epidemiology. She trained in emergency medicine at Oregon Health and Sciences University and has spent the past year as an ultrasound fellow here at UCSF.

## FACULTY ANNOUNCEMENTS

**Dr. Hemal Kanzaria** and **Dr. Jahan Fahimi**, Assistant Professors of Clinical Emergency Medicine, will be serving as co-chairs of the new Social Emergency Medicine and Population Health section of the Society for Academic Emergency Medicine (SAEM) starting in 2018.

**Dr. Guy Shochat**, Associate Clinical Professor of Emergency Medicine, will serve as the APEX Adult EM Lead at Parnassus effective August 1.

**Dr. Peter Sokolove**, Professor and Chair, was elected by the UCSF Clinical Chairs to serve on the UCSF Faculty Practice Advisory Committee, which oversees and makes recommendations on the mechanics of the UCSF Health clinical funds flow model and faculty practice operations.

**Dr. Peter Sokolove** was appointed to the Board of Governors for ACEP's Emergency Medicine Action Fund to represent the Association of Academic Chairs in Emergency Medicine (AACEM). He also lectured at the National Emergency Medicine Board Review Courses in Las Vegas and Baltimore.

## INVITED PRESENTATIONS

**Dr. Renee Hsia**, Professor of Emergency Medicine, was invited to speak at the University of Cincinnati, Emergency Medicine Residency Grand Rounds on June 21, 2017. Her talk was titled "Disparities in Access to Emergency Care in the United States: How It Affects All of Us."

**Dr. Jahan Fahimi**, Assistant Professor of Clinical Emergency Medicine, presented at the Highland Emergency Medicine conference "Grand Rounds Panel - Stroke Care Controversies" on May 31.

## RESEARCH FUNDING AWARDS

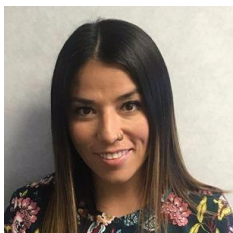
**Dr. Renee Hsia** has received notice of funding of her R01 proposal on "Effects of Percutaneous Coronary Intervention Lab Openings and Closures on Patients, Hospitals, and Communities." The project will be 4 years beginning now through April 2021.

**Dr. Rais Vohra**, Associate Professor of Clinical Emergency Medicine, received the American College of Medical Toxicology (ACMT) Innovation in Research and Teaching Award for "Global Education in Toxicology Toolkit (GETKIT): A One-day Course for Teaching Poisoning Essentials in Low and Middle Income Countries."

Dr. Erica Valdovinos, a former UCSF medical student and now EM resident at Highland Hospital, received an EMF/EMRA Resident Grant to look at "The Impact of the Affordable Care Act and the Expansion of Medicaid on Racial Disparities in Coronary Reperfusion after Acute Myocardial Infarction." **Dr. Matthew Niedzwiecki**, Assistant Adjunct Professor of Emergency Medicine, and **Dr. Renee Hsia**, Professor of Emergency Medicine, are both serving as her mentors on this grant, which also serves as the basis for an R03 grant they submitted to AHRQ.

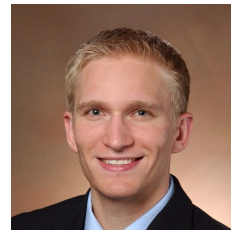


## NEW FELLOWS



**Nancy Anaya, MD, MPH**, joined our department as an Ultrasound Fellow on August 1. She attended medical school at UC Irvine and completed her Emergency Medicine residency program at Detroit Medical Center-Sinai-Grace. She also received an MPH from USC and an MS in Global Health from UCSF. Dr. Anaya will be working clinically at Parnassus and ZSFG.

**Thomas Dalton, MD**, joined our department as a Pediatric Emergency Medicine Fellow on July 1. He attended medical school at the University of Colorado and completed his Emergency Medicine residency program at Hennepin County Medical Center. He also completed a Cardiovascular Emergency Medicine fellowship program at Stanford University. Dr. Dalton will be working clinically at UCSF Benioff Children's Hospital Oakland and Mission Bay.



**Nicole D'Arcy, MD**, joined our department as an EMS & Disaster Medicine Fellow on July 1. She attended medical school at Stanford University and completed her Emergency Medicine residency program at Harbor-UCLA Medical Center. Dr. D'Arcy will be working clinically at ZSFG and the VA. She will also be working with San Francisco EMS, SFDPH, SFFD, and Alameda County EMS.

**Robert (Bob) Goodnough, MD**, joined our department as a Medical Toxicology Fellow on July 1. He attended medical school at Case Western Reserve University and graduated from our very own UCSF-SFGH Emergency Medicine residency program. Dr. Goodnough will be working at the Poison Control Center and also clinically at ZSFG and the VA.



## MEDIA COVERAGE

**Dr. Renee Hsia**, Professor of Emergency Medicine, Dr. Renee Hsia, Professor of Emergency Medicine, received media attention from [MedPage Today](#), [Cardiovascular Business](#), [Huffington Post](#) and [Reuters](#) for her publication in the June issue of *Health Affairs* titled "[Impact of ambulance diversion: black patients with acute myocardial infarction had higher mortality than whites.](#)"

**Dr. Hsia** was a guest speaker on Southern California Public Radio station 89.3 KPCC's Airtalk program discussing "[Why are ER visit rates up in California, despite Obamacare?](#)" on June 13.

**Dr. Rais Vohra**, Associate Professor of Clinical Emergency Medicine, was quoted in *The Fresno Bee* on June 23 in an article titled "[Prickly heat rash to body temp of 108 - ER doctors have seen it all.](#)"

## RESIDENT ANNOUNCEMENTS



The first-ever UCSF DEM LGBT Pride Residents, Spouses, Friends and Allies Reception was held at the home of **Dr. John Brown**, Associate Clinical Professor of Emergency Medicine, on June 16, 2017. We had a great turnout to celebrate the end of week 1 of intern orientation, the beginning of LGBT pride week and the excellent weather!

## STAFF ANNOUNCEMENTS

**Sally Jeon**, Education Analyst, was admitted to the Office of Diversity and Outreach's Diversity & Inclusion Certificate Fall 2017 Program.

## PUBLICATIONS

Becker TK, Hansoti B, Bartels S, Hayward AS, Hexom BJ, Lunney KM, Marsh RH, Osei-Ampofo M, Trehan I, Chang J, Levine AC, Global Emergency Medicine Literature Review (GEMLR) Group (**Bills CB** listed as member). [Global Emergency Medicine: A review of the literature from 2016](#). *Academic Emergency Medicine*. 2017 May 5. doi: 10.1111/acem.13216. Epub ahead of print.

Joshi N, Hayes BD, **Mason J**, Grock A. [Does the Intranasal Route Pass the Sniff Test?](#) *Annals of Emergency Medicine*. 2017 Aug; 70(2):212-14.

**Kanzaria HK**, Hoffman JR. Letter to the Editor: Five High Cost Patient Groups. *Journal of General Internal Medicine*. 2017. doi:10.1007/s11606-017-4106-y.

Kim J, Barreix M, Babcock C, **Bills CB**. [Acute care referral systems in Liberia: transfer and referral capabilities in a low-income country](#). *Prehospital Disaster Medicine*. 2017 Jul 27. 1-9.

**Kornblith AE**, Fahimi J, **Kanzaria H**, Wang RC. [Predictors for under-prescribing antibiotics in children with respiratory infections requiring antibiotics](#). *American Journal of Emergency Medicine*. 2017 Jul 28. doi: 10.1016/j.ajem.2017.07.081. Epub ahead of print.

Levine M, Stellpflug S, Pizon AF, Traub S, **Vohra R**, Wiegand T, Traub N, Tashman D, Desai S, **Chang J**, Nathwani D, Thomas S. [Estimating the impact of adopting the revised United Kingdom acetaminophen treatment nomogram in the U.S. population](#). *Clinical Toxicology (Phila)*. 2017 Jul; 55(6):569-72.

Losonczy LI, Hsieh D, Wang M, Hahn C, Trivedi T, Rodriguez M, **Fahimi J**, Alter H. [The Highland Health Advocates: a preliminary evaluation of a novel programme addressing the social needs of emergency department patients](#). *Emergency Medicine Journal*. 2017 Jun 22. doi: 10.1136/emermed-2015-205662. Epub ahead of print.

**Mason J**, Herbert M, Schriger DL. [Pulmonary embolism prevalence in admitted syncope patients: 1 in 6 really? Answers to the March 2017 Journal Club questions](#). *Annals of Emergency Medicine*. 2017 Aug; 70(2):257-60.

Moffet HH, Warton EM, Siegel L, **Sporer K**, Lipska KJ, Karter AJ. [Hypoglycemia patients and transport by EMS in Alameda County, 2013-15](#). *Prehospital Emergency Care*. 2017 Jun 22; 1-6. doi: 10.1080/10903127.2017.1321707.

Mower W, Gupta M, **Rodriguez R**, Hendej GW. [Validation of the sensitivity of the National Emergency X-Radiography Utilization Study \(NEXUS\) Head computed tomographic \(CT\) decision instrument for selective imaging of blunt head injury patients](#). *PLoS Medicine*. 2017 Jul 11; 14(7):e1002313. doi: 10.1371/journal.pmed.1002313.

Riddell J, Jhun P, Fung C, Comes J, Sawtelle S, Tabatabai R, Joseph D, Shoenberger J, **Chen E**, **Fee C**, Swadron SP. [Does the flipped classroom improve learning in graduate medical education?](#) *Journal of Graduate Medical Education*. August 2017; 9(4):491-6.

Sabbatini AK, **Hsia RY**. [It's Time for a Strategic Approach to Observation Care](#). *Journal of Hospital Medicine*. 2017 June; 12(6):479-80.

Seim J, English J, **Sporer K**. [Neighborhood poverty and 9-1-1 ambulance contacts](#). *Prehospital Emergency Care*. 2017 June 16; 1-7. doi: 10.1080/10903127.2017.1325951. Epub ahead of print.

Spyres MB, Ruha AM, Kleinschmidt K, **Vohra R**, Smith E, Padilla-Jones A. [Epidemiology and clinical outcomes of snakebite in the elderly: a ToxIC database study](#). *Clinical*

*Toxicology (Phila)*. 2017 Jul 13; 1-5. doi: 10.1080/15563650.2017.1342829. Epub ahead of print.

Torres J, Avalos N, Echols L, **Mongelluzzo J, Rodriguez RM**. [Low yield of blood and wound cultures in patients with skin and soft-tissue infections](#). *American Journal of Emergency Medicine*. 2017 Aug; 35(8):1159-61.

Welch J, **Sawtelle S**, Cheng D, Perkins T, Ownbey M, MacNeill E, Hockberger R, Rusyniak D. [Faculty mentoring practices in Academic Emergency Medicine](#). *Academic Emergency Medicine*. 2017 Mar; 24(3):362-70.

Werner S, Grock A, **Mason J**. [Antibiotics only for appendicitis?](#) *Annals of Emergency Medicine*. 2017 Jul; 70(1):12-14.

Wong A, **Vohra R**, Dawson AH, Stolbach A. [Impact of online toxicology training on health professionals: the Global Educational Toxicology Uniting Project \(GETUP\)](#). *Clinical Toxicology (Phila)*. 2017 Jun 15; 1-5.



## ONLINE TOOLS

**Maria C. Raven**, "[Diagnostic Overshadowing Dangers](#)," Agency for Healthcare Research and Quality, Patient Safety Network, WebM&M Cases & Commentaries, published online June 2017.

[Website](#) [About](#) [Education](#) [Research](#) [Clinical Care](#) [Faculty](#) [Highlights](#)

UCSF DEM, 505 Parnassus, San Francisco, CA 94143

[SafeUnsubscribe™ {recipient's email}](#)

[Forward this email](#) | [Update Profile](#) | [About our service provider](#)

Sent by [karen.lau@ucsf.edu](mailto:karen.lau@ucsf.edu) in collaboration with

**Constant Contact** 

Try it free today